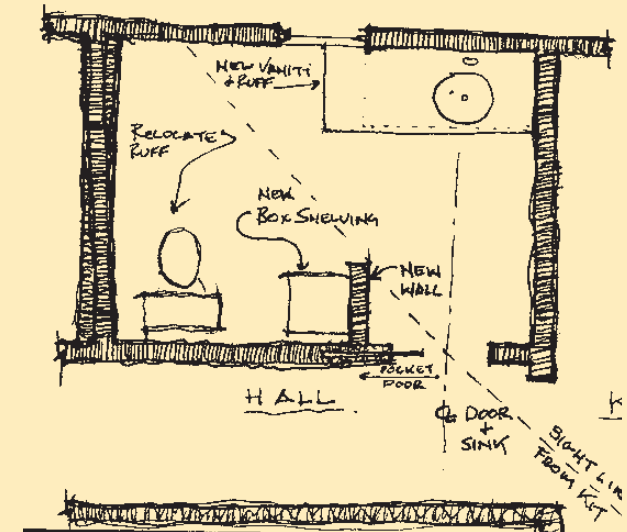


Eric J. Morrow
Work Sample
Project: 121 1/2 Bath, NY
Office: Independent
Date: 2003-2004



An existing 1/2 bath next to a kitchen is a painful adjacency any way you look at it. While relocating the bath (or kitchen) was not an option, it was possible to revise the bathroom layout to best fit the condition. Only the vanity and window can be viewed from the hall if the door is left open. Box shelving and vanity were custom designed using 3/4" Baltic birch plywood and finger joints. Countertop is 3 cm. black Zimbabwe granite. Faucet by Aquaglass. Floor material is 12"X12" cleft cut slate from China.